

Twisco

■ SLT 415 / 415 B / 420 B

The multi-purpose pocket telehandler !

- Compact
- Manoeuvrable
- Transportable*



* according to model and road regulations in the country

 **MANITOU**

Courtesy of Crane.Market

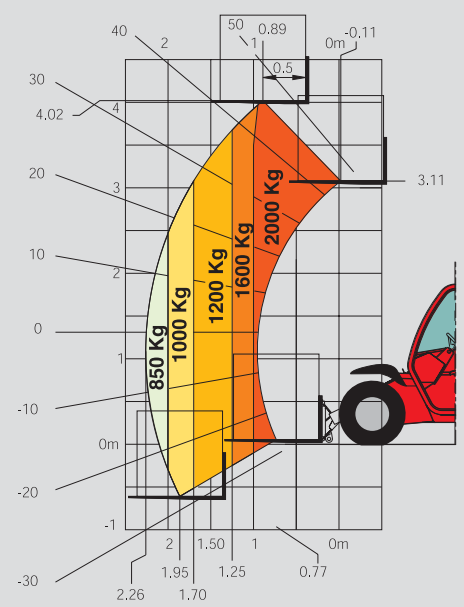
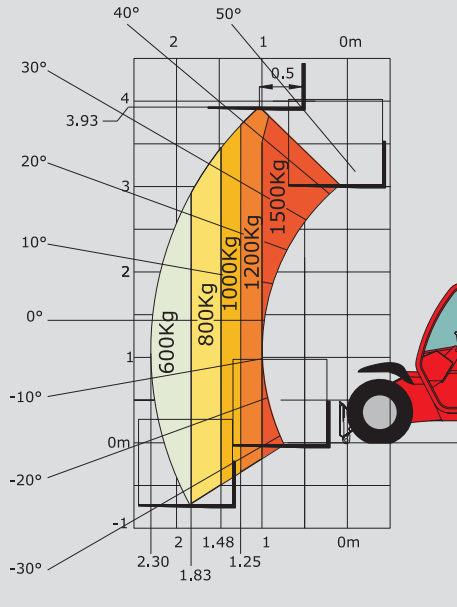
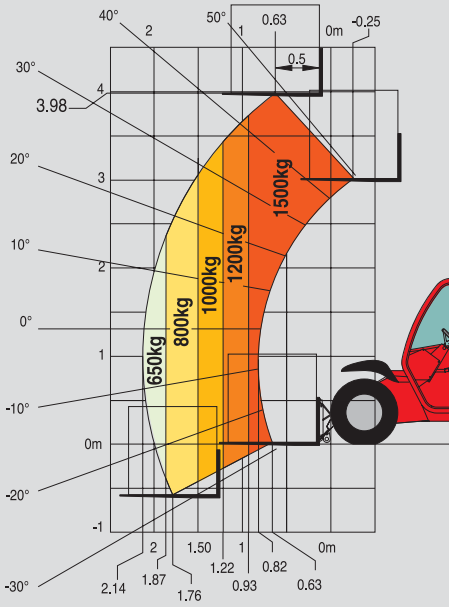
		SLT 415 Evolution	SLT 415 B Evolution	SLT 420 B
	Lifting capacity (500 mm load centre)	1500 kg	1500 kg (with fork-carrier)	2000 kg (with fork-carrier)
	Lifting height	3.98 m	3.93 m (with fork-carrier)	4.02 m (with fork-carrier)
	Max. front reach	2.14 m	2.30 m	2.26 m
	Tyres (Front and rear)	 10 x 16.5 10 PR SKS		 31 x 13-16.5
	Carriage	 Built-in carriage	 «Mini-loader» type carriage rapid-mount	 «Mini-loader» type carriage rapid-mount
	Engine	Perkins engine 404 C22 Capacity: 4 cyl. - 2216 cm ³ Power: (ISO/TR 14396) 50 HP/38 kW		
	Transmission	3-wheel drive (engines 400 cc) Electrohydraulic Reversing shift Service brake on Front wheels Differential lock (flow divider)		
	Hydraulic	Main geared pump 250 bar/40 l/min		
	Weight (with forks or Tipping Fork Carrier)	2520 kg	2570 kg	3085 kg
	Overall width	1662 mm	1662 mm	1662 mm
	Overall height	1900 mm	1900 mm	1900 mm
	Turning radius (rear wheel axle)	2225 mm	2225 mm	2225 mm (AR)
	Turning circle (AR machine)	2831 mm	2831 mm	2904 mm
	Drawbar pull (laden)	1890 daN	1890 daN	1720 daN
	Ground clearance	258 mm	258 mm	258 mm
	Speed	13.5 km/h	13.5 km/h	12 km/h
	Gradeability (laden)	44% (40°)	44% (40°)	44% (40°)
	Lever	 FNR	 JSM	 JSM
OPTIONS	ATTACHMENTS HYDRAULIC			
	• Standard rate line (40 l/min)	yes	yes	yes
	• Back to tank	no	yes	yes
	• High Flow* (flow rate 100 l/min + back to tank + engine speed selector)	no	yes	yes
	HIGH TORQUE	750 cc Rear wheel motor		
	• HT 1	yes (+ rear tyre 31x15.5)	yes (+ rear tyre 31x15.5)	yes (standard tyres)
	• HT 2	yes (+ 3 tyres 31x15.5)	yes (+ 3 tyres 31x15.5) overall width 1875 mm	yes (3 standard tyres)
	• Drawbar pull HT	2275 daN	2275 daN	2150 daN
	COMPLETE CAB (rigid door, electric window, heating/demister)	yes	yes	yes
	Other adaptations available: CONTACT US	Side-Shift Carriage, special paint, digicode/anti-theft, industrial tyres...		

*High Flow: option recommended for certain accessories such as sweepers, saws, planers, mowers...

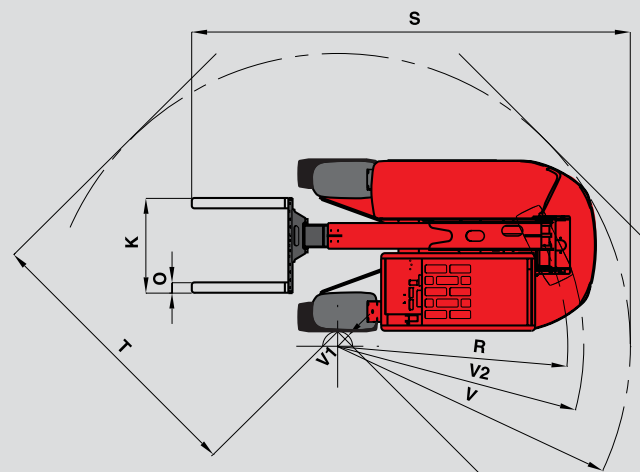
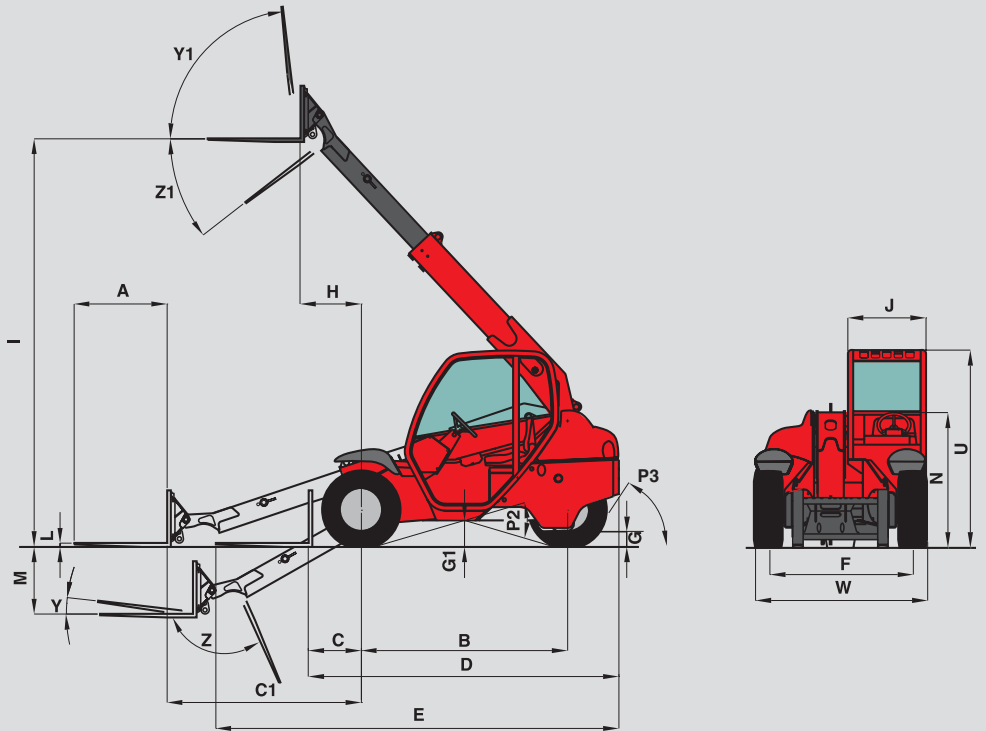
SLT 415
Standard EN 1459

SLT 415 B
Standard EN 1459 B

SLT 420 B
Standard EN 1459 B



	SLT 415	SLT 415 B	SLT 420 B
A	1100	1100	1100
B	2000	2000	2000
C	510	533	520
C1	1882	1905	2030
D	3008	3030	3090
E	4108	4270	4330
F	1386	1386	1386
G	146	146	144
G1	258	258	258
H	590	613	614
I	3980	3930	4020
J	750	750	750
K	916	1082	1082
L	35	35	35
M	652	655	655
N	1300	1300	1300
O	100	100	100
P2	33°	33°	33°
P3	64°	64°	42°
R	2225	2225	2225
S	4441	3364	3437
T	2728	2728	2801
U	1900	1900	1900
V	2831	2831	2904
V1	145	145	145
V2	2380	2380	2380
W	1662	1662	1662
Y	7°	1°	1°
Y1	83°	77°	77°
Z	114°	126°	126°
Z1	38°	49°	50°



Cab option

Manitou, material handling world leader

Inventor of the rough terrain forklift truck, Manitou offers today the most comprehensive range to meet all specific handling and personal lifting requirements :



MANISCOPIC
Telescopic trucks



MANITOU
Rough terrain and semi industrial masted trucks



MANIACCESS
Access equipment



Twisco
Compact telescopic handler



MANIHOE
Backhoe/Loader with telescopic boom



MANITRANSIT
Truck mounted forklifts



MANILOADER
Swinging arm and articulated wheeled loaders



MANILEC
Electric pallet trucks and electric stackers

A network of skilled professionals at your service !

With a network of 600 service and parts centres in more than 120 countries, Manitou provides an efficient after-sales support based on the expertise of thousands of factory trained technicians.



The equipment supplied with each model may differ from that described in this leaflet. For more details, contact your MANITOU dealer.