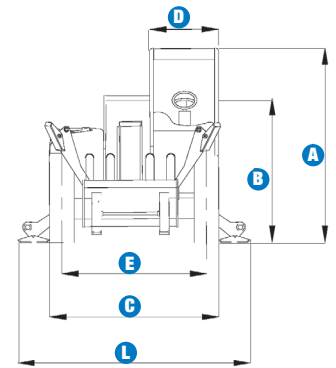
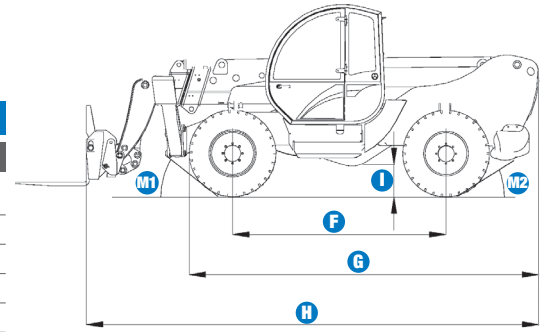


Specifications

MODEL		GTH™-3512 SX	
MEASUREMENTS		Metric	Imperial
Lifting height maximum	12.05 m	39 ft 6 in	
Lifting capacity maximum	3,500 kg	7,715 lbs	
Lift capacity at maximum height	2,500 kg	5,511 lbs	
Lift capacity at maximum reach	1,200 kg	2,645 lbs	
Forward reach maximum	8.59 m	28 ft 2 in	
Reach at maximum height	1.34 m	4 ft 5 in	
A Height	2.41 m	7 ft 11 in	
B Height at steering wheel	1.65 m	5 ft 5 in	
C Width	2.25 m	7 ft 5 in	
D Inside cab width	78 cm	2 ft 7 in	
E Track	1.85 m	6 ft 1 in	
F Wheelbase	2.75 m	9 ft	
G Length at front wheels	4.39 m	14 ft 5 in	
H Length at fork-holder plate	5.78 m	18 ft 11 in	
I Ground clearance	40 cm	1 ft 4 in	
J Overall width, stabilisers extended	2.93 m	9 ft 7 in	
M1 Obstruction angle	32°	32°	
M2 Departure angle	37°	37°	



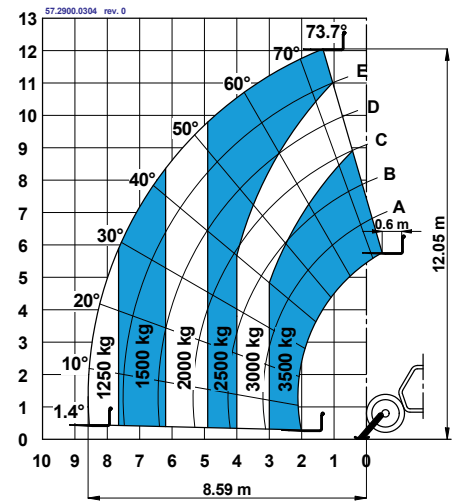
PRODUCTIVITY		
Inside/outside turning radius	1.8 m/3.85 m	5 ft 11 in/ 12 ft 7 in
Break-out force (with 800 L shovel SAE J 732/80)	5,500 kg	12,124 lbs
Towing capacity at dynamometer	6,400 kg	14,108 lbs
Travel speed	35 km/h	22 mph
Fork-holder plate rotation	128°	128°
Floating forks	Length 1200 mm Section 120 x 45 mm	Length 3 ft 11 in Section 5 in x 1.77 in
Tyres (DIN 70361)	405/70-20" PR14 8 holes wheel disc	
Lifting/lowering speed	11.5 sec./7 sec.	11.5 sec./7 sec.
Extension/retraction	20 sec./14 sec.	20 sec./14 sec.

POWER		
Engine	Deutz TD2011 L04W 4-cylinder Turbo Diesel 60 kW (81.5 hp), Tier3	
Tank capacities		
Fuel	90 L	20 gal
Engine oil	10 L	2 gal
Hydraulic oil	80 L	17.5 gal
Hydraulic output/pressure	87 L/min-280 bars	19 gal/min-4,061 psi

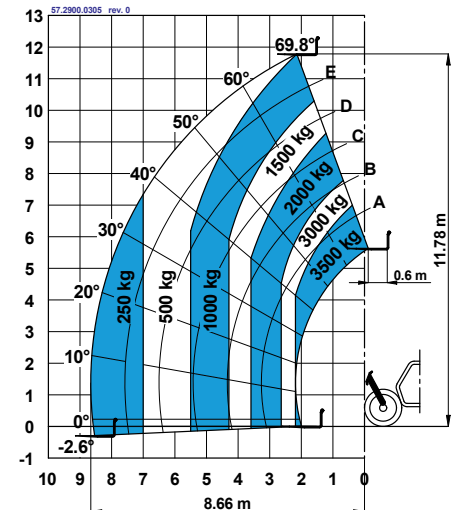
WEIGHT		
Weight*	8,900 kg	19,619 lbs

STANDARDS COMPLIANCE	
Operating cab conforms to	ISO3471 (ROPS) and ISO3449 (FOPS)
Low emission engine conforms to	UE 97/68 directives.
	GOST R 50950-96

* Weight will vary depending on options and/or country standards



Lift capacity chart (with stabilisers)



Lift capacity chart (without stabilisers)
EN1459, Annex B

Features

STANDARD FEATURES

MEASUREMENTS

- 3,500 kg (7,715 lb) maximum lift capacity
- 12.05 m (39 ft 6 in) maximum lift height
- 8.59 m (28 ft 2 in) maximum forward reach

PRODUCTIVITY

- 4 x 4
- 4 - wheel steer
- 3 steering modes:
 - front wheel steer
 - crab steer
 - coordinated steer
- Power assisted steering
- Front stabilisers
- Hydrostatic transmission with variable displacement pump and motor
- Two-speed mechanical gearbox
- Hydraulic proportional distributor
- Multifunction 4 x 1 joystick
- Limited slip differential on front axle
- Floating forks
- Attachment holder plate with mechanical coupling
- Boom length and angle indicators correspond to the load charts
- Door with two sections: steel on bottom, glass on top. Both sections open separately
- Adjustable suspended seat
- Large diameter steering wheel
- Front and rear windscreen wipers
- Sunshield
- Protection grid inside cabin roof
- Front & rear lights
- Side mounted engine for easy access to components
- Oil immersed, multi-disc brakes on rear axles
- Lockable fuel tank
- Longitudinal stability control system with load monitor
- Visible display with coloured LEDs
- Audible alarm
- Automatic lock-out of boom extension and lowering
- Lockout of stabilisers and chassis levelling with boom raised and/or boom extended
- Maintenance collar

POWER

- Deutz Turbo Diesel 60 kW (81.5 hp)

TYRES

- 405/70-20" PR14. 8 holes wheel disc (DIN 70361)



OPTIONS & ACCESSORIES

PRODUCTIVITY

- Air conditioning
- Second hydraulic line on boom
- Windshield protection grid
- Additional rear view mirror
- Adjustable spotlight on cab
- Adjustable spotlight on boom
- Hydraulic quick coupling for attachments
- Concrete mixing bucket pre-arrangement
- Hydraulic inching
- 6 ton towing hitch
- Spare wheel
- Foam filled tyres
- 10 ton hydraulic jack and 24 mm wheel nut wrench

ATTACHMENT OPTIONS

- Loading shovel 800 L
- Light material loading shovel 2000 L
- Concrete bucket 500/800 L manual/hydraulic discharge
- Concrete mixing bucket 500 L with remote control
- Fork side shift (+/- 100 mm)
- FEM 3 plate and forks kit
- Fixed hook on plate
- 2 m jib, 2000 kg capacity
- Brick-holder basket
- Hydraulic winch 3000 kg

UK

Millennium House
Brunel Drive
Newark NG24 2DE
UK
Tel: +44 (0)1476 584333
Fax: +44 (0)1476 584334

France

10, ZA de la Croix St. Mathieu
28320 Gallardon
France
Tel: +33 (0)2 37 26 09 99
Fax: +33 (0)2 37 26 09 98

Germany

Finienweg 3
28832 Achim/Bremen
Germany
Tel: +49 (0)4202 8852-0
Fax: +49 (0)4202 8852-25

Spain

Gaià 31, Pol. Ind. Plá d'en Coll
08110 Montcada i Reixac
Barcelona
Spain
Tel: +34 93 572 50 90
Fax: +34 93 572 50 91

Scandinavia

Importgatan 17
422 46 Hisings Backa
Sweden
Tel: +46 31 57 51 00
Fax: +46 31 57 90 20

Middle East

Terex Middle East
PO Box 282325, Dubai
U.A.E.
Tel: +971 4 339 1800
Fax: +971 4 339 1802
Email: InfoME@terex.com

Genie United States

18340 NE 76th Street
P.O. Box 97030
Redmond, WA
USA 98073-9730
Tel: +1 425 881-1800
Fax: +1 425 883-3475

Email: AWP-InfoEurope@terex.com

Distributed By: