

Self-Propelled Telescopic Booms

S[®]-40 XC[™], S-45 XC, S-40 TraX[™] & S-45 TraX

Specifications

Models	S-40 XC		S-45 XC	
Measurements	US	Metric	US	Metric
Working height maximum*	45 ft 6 in	13.87 m	50 ft 6 in	15.39 m
Platform height maximum	39 ft 6 in	12.04 m	44 ft 6 in	13.56 m
Horizontal reach maximum	31 ft 1 in	9.74 m	36 ft 2 in	11.02 m
Below ground reach	1 ft	0.30 m	4 ft 2 in	1.27 m
A Platform length - 8 ft model	3 ft	0.91 m	3 ft	0.91 m
Platform length - 6 ft model	2 ft 6 in	0.76 m	2 ft 6 in	0.76 m
B Platform width - 8 ft model	8 ft	2.44 m	8 ft	2.44 m
Platform width - 6 ft model	6 ft	1.83 m	6 ft	1.83 m
C Height - stowed	8 ft 3 in	2.54 m	8 ft 3 in	2.51 m
- stowed with Trax option	8 ft 5 in	2.56 m	8 ft 5 in	2.56 m
D Length - stowed	25 ft 6 in	7.77 m	26 ft 3 in	8.00 m
E Width - standard tires	8 ft 2 in	2.49 m	8 ft 2 in	2.49 m
- Trax option	7 ft 7 in	2.31 m	7 ft 7 in	2.31 m
F Wheelbase	8 ft	2.44 m	8 ft	2.44 m
G Ground clearance - center	1 ft .5 in	0.32 m	1 ft .5 in	0.32 m
- Trax option	1 ft	30.48 cm	1 ft	30.48 cm

Productivity

Maximum lift capacity - unrestricted	660 lb	300 kg	660 lb	300 kg
- restricted	1,000 lb	454 kg	1,000 lb	454 kg
Platform rotation	160°		160°	
Vertical jib rotation	—		133°	
Turntable rotation	360° continuous		360° continuous	
Turntable tailswing	36 in	0.91 m	36 in	0.91 m
Drive speed - stowed	4.0 mph	6.4 km/h	4.0 mph	6.4 km/h
- raised or extended	0.68 mph	1.1 km/h	0.68 mph	1.1 km/h
- Trax option stowed	2.5 mph	4.0 km/h	2.5 mph	4.0 km/h
- Trax option raised	0.68 mph	1.1 km/h	0.68 mph	1.1 km/h
Maximum slope rating**	45%		45%	
Turning radius - inside	6 ft 10 in	2.08 m	6 ft 10 in	2.08 m
- outside	17 ft 2 in	5.23 m	17 ft 2 in	4.78 m
- Trax option inside	6 ft 8 in	2.03 m	6 ft 8 in	2.03 m
- Trax option outside	17 ft	5.18 m	17 ft	5.18 m
Controls	12 V DC proportional		12 V DC proportional	
Tires - RT foam-filled	33/16LL 500, 10 ply, 19.5 in wheel		33/16LL 500, 10 ply, 19.5 in wheel	
- Trax, Quadra Track System	Vermeer Track System		Vermeer Track System	
Tilt sensor activation	front to back: 7° and side to side: 5°			

Power

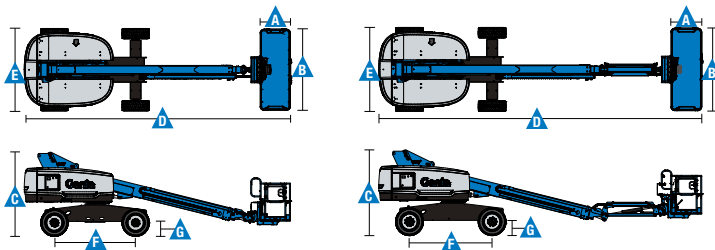
Power source	49 hp (35.79 kW) Perkins diesel T4f 404F-E22T			
	48 hp (35.79 kW) Deutz diesel T4f F3L-2011			
	49 hp (36.54 kW) Deutz diesel T4f D2.9L4			
	60hp (44.74kW) Ford gas/LPG MSG425			
Auxiliary power unit	12 V DC		12 V DC	
Hydraulic tank capacity	38 gal	144 L	38 gal	144 L
Fuel tank capacity	35 gal	132 L	20 gal	76 L

Weight***

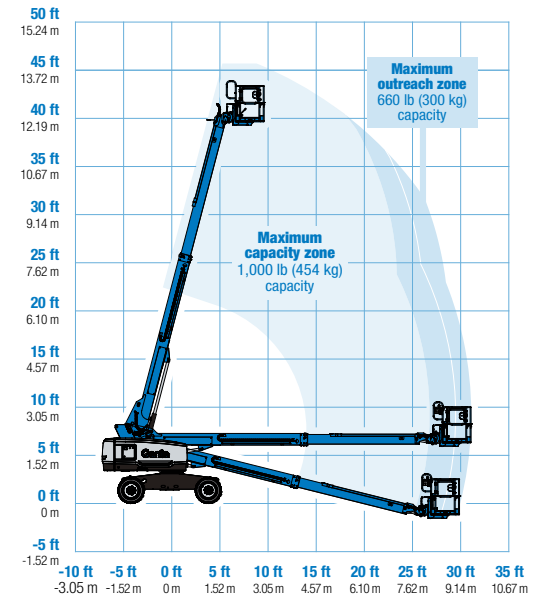
Standard	14,124 lb	6,407 kg	16,300 lb	7,394 kg
Trax	15,364 lb	6,969 kg	17,540 lb	7,956 kg

Standards Compliance

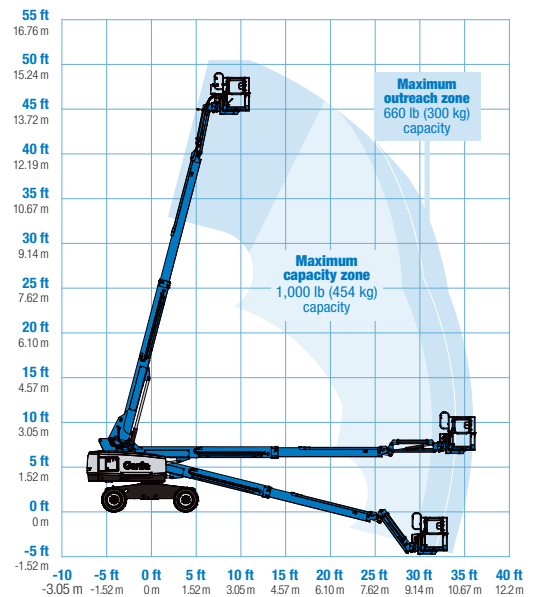
ANSI A92.20, CSA B354.6 and AS 1418.10



Range Of Motion S-40 XC



Range Of Motion S-45 XC



* The metric equivalent of working height adds 2 m to platform height. U.S. adds 6 ft to platform height.

** Gradeability applies to driving on slopes. See operator's manual for details regarding slope ratings.

*** Weight will vary depending on options and/or country standards.

Features

Standard Features

Measurements

S-40 XC and S-40 TraX

- 45 ft 6 in (13.87 m) working height
- 31 ft 1 in (9.7 m) horizontal reach
- 660 lb (300 kg) unrestricted and 1,000 lb (454 kg) restricted lift capacity

S-45 XC and S-45 TraX

- 50 ft 6 in (15.39 m) working height
- 36 ft 2 in (11.02 m) horizontal reach
- 660 lb (300 kg) unrestricted and 1,000 lb (454 kg) restricted lift capacity

Productivity

- Self-leveling platform
- 160° hydraulic platform rotation
- Proportional joystick controls
- Fuel select switch on platform and ground control panels (Gas/LPG models)*
- Drive enable
- Alarm package: flashing beacon and travel alarm
- AC power cord to platform
- Horn
- Hour meter
- Tilt alarm
- Descent alarm
- 360° continuous turntable rotation
- Locking turntable covers
- Positive traction drive
- Two speed wheel motors
- Entry Toeboard
- Lift Guard[™] Contact Alarm
- Lift Tools[™] Work Tray
- Lift Connect[™] Telematics
- Hydraulic oil cooler

Power

- 12 V DC auxiliary power
- Anti-restart engine protection
- Auto engine fault shutdown
- Intake air heater (Deutz engine)

Easily Configured To Meet Your Needs

Platform Options

- Steel 8 ft (2.44 m) tri entry with side swing gate (standard)
- Steel 6 ft (1.83 m) dual entry with side swing gate

Jib Options

- Non-jib (S-40 only)
- 5 ft (1.52 m) jib boom (S-45 only)

Engine Options

- 49 hp (36.54 kW) Deutz diesel T4f** (standard)
- 48 hp (35.79 kW) Deutz diesel T4f F3L-2011
- 48 hp (35.79 kW) Perkins diesel T4f**
- 60 hp (44.74kW) Ford Gas/LPG

Tire Options

- Rough terrain foam-filled (standard)
- Rough terrain non-marking (foam-filled)
- Quadra Trax (track system)

Axels

- Active Oscillation, 4WD



* Available only with Ford engine
** Also available as Tier 4i in limited regions
*** Available through aftermarket parts only

Options & Accessories

Productivity Options

- Lift Power[™]
 - 3 kW AC Generator
 - 12 kW 240 V / 60 Hz Welder Ready package
 - 12 kW Welder Equipped, Select Lincoln or Miller (12 kW options include a fire extinguisher and fireproof sleeves)
- Lift Guard Platform Mesh - Half
- Lift Guard Platform Mesh - Full
- Lift Guard Platform Mesh - Screen (8ft platform only)***
- Platform top auxiliary rail
- Air line to platform
- Specialty hydraulic oil (cold weather, fire resistant, or biodegradable)
- Hostile environment kit
- Deluxe hostile environment kit
- Aircraft protection package (6 ft platform only)
- Thumb rocker steer
- Alarm package
- Panel cradle package
- Lockable platform control box covers
- Tow package
- Work light package
- Operator Protective Structure***
- Fall Arrest Bar
- Lift Tools Expo Installer***
- Lift Tools Access Deck***

Power Options

- Engine gauge package*
- Cold Weather Packages
- Diesel scrubber/muffler (catalytic muffler, Tier 4i only)
- LPG tank 33.5 lb (15.19 kg) capacity
- Intake air pre-cleaner (Tier 4i only)
- Positive Air Shutoff System (Deutz engine only)

Genie United States

6464 185th Ave. NE
Redmond, WA 98052
Telephone +1 (425) 881-1800
Toll Free in USA/Canada +1 (800)-536-1800
Fax +1 (425) 883-3475

Distributed By: