

Technical sheet :

280 TJ ST5

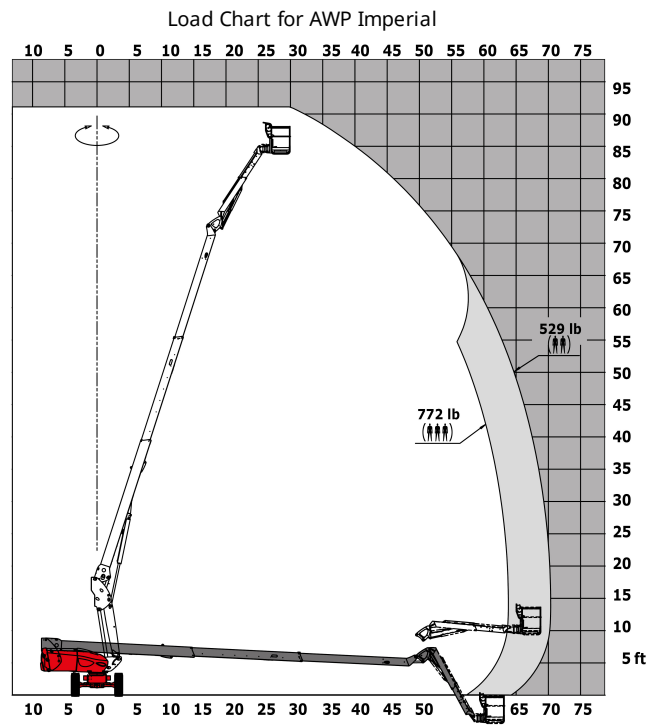
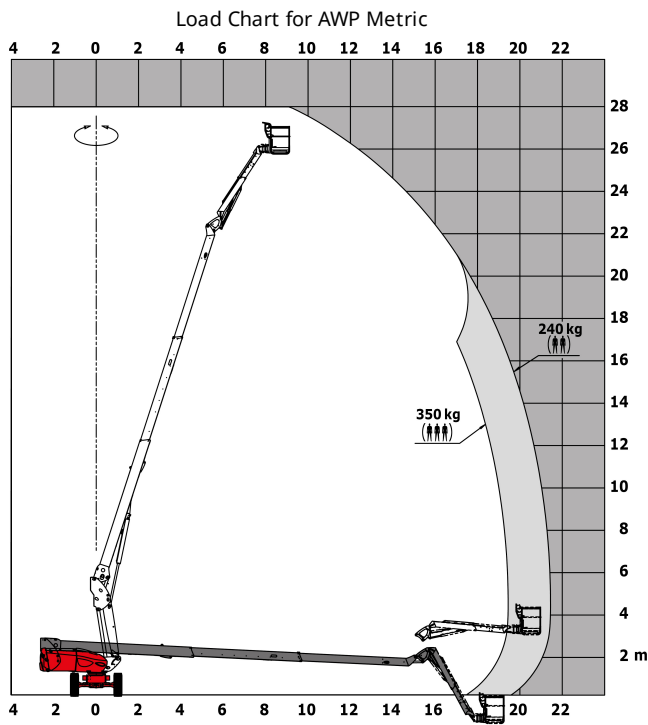


Capacities		Metric	Imperial
Working height	h21	27.73 m	91 ft
Platform height	h7	25.73 m	84 ft 5 in
Max. outreach	r1	21.45 m	70 ft 4 in
Pendular arm rotation (top / bottom)		+56.8 ° / -62 °	+56.8 ° / -62 °
Platform capacity	Q	350 kg	772 lbs
Turret rotation		360 °	360 °
Platform rotation (right / left)		90 ° / 90 °	90 ° / 90 °
Number of people (inside / outside)		3 / 2	3 / 2
Weight and dimensions			
Platform weight*		16500 kg	36376 lbs
Platform dimensions (length x width)	lp / ep	2.3 m x 0.9 m	7 ft 7 in x 2 ft 11 in
Overall width	b1	2.48 m	8 ft 2 in
Overall length	l1	11.36 m	37 ft 3 in
Overall height	h17	2.73 m	8 ft 11 in
Overall length (stowed)	l9	8.09 m	26 ft 7 in
Overall height (stowed)	h18	2.71 m	8 ft 11 in
Floor height (access)	h20	0.4 m	1 ft 4 in
Telescopic jib length folded / unfolded		2800 mm / 4300 mm	110.236 in / 169.291 in
Counterweight offset (turret at 90°)	a7	1.43 m	4 ft 8 in
Internal turning radius (over tyres)	b13	1.97 m	6 ft 6 in
External turning radius	Wa3	4.35 m	14 ft 3 in
Ground clearance at centre of wheelbase	m2	0.41 m	1 ft 4 in
Wheelbase	y	2.8 m	9 ft 2 in
Performances			
Drive speed - stowed		4.5 km/h	2.8 mph
Drive speed - raised		0.8 km/h	0.5 mph
Gradeability		40 %	40 %
Permissible leveling		4 °	4 °
Wheels			
Tyres type		Solid Tyres Cured-On	Solid Tyres Cured-On
Dimensions of front wheels / rear wheels		1025 x 365 mm - 1025 x 365 mm	1025 x 365 mm - 1025 x 365 mm
Drive wheels (front / rear)		2 / 2	2 / 2
Steering wheels (front / rear)		2 / 2	2 / 2
Braking wheels (front / rear)		2 / 2	2 / 2
Engine/Battery			
Engine brand / model		Yanmar - 4TNV88C	Yanmar - 4TNV88C
I.C. Engine power rating / Power (kW)		46 Hp / 34.3 kW	46 Hp / 34.3 kW
Miscellaneous			
Ground Pressure		21.3 daN/cm²	308.93 PSI
Hydraulic Pressure		400 Bar	28 PSI
Hydraulic tank capacity		94 l	24.83 US gal
Fuel tank		76 l	20.08 US gal
Noise to environment (LwA)		102 dB(A)	102 dB(A)
Vibration on hands/arms		< 0.5 m/s	< 1.64 ft/s
Standards compliance			
This machine is in compliance with:		European directives: 2006/42/EC- Machinery (revised EN280:2013) - 2004/108/EC (EMC) - 2006/95/EC (Low voltage)	European directives: 2006/42/EC- Machinery (revised EN280:2013) - 2004/108/EC (EMC) - 2006/95/EC (Low voltage)

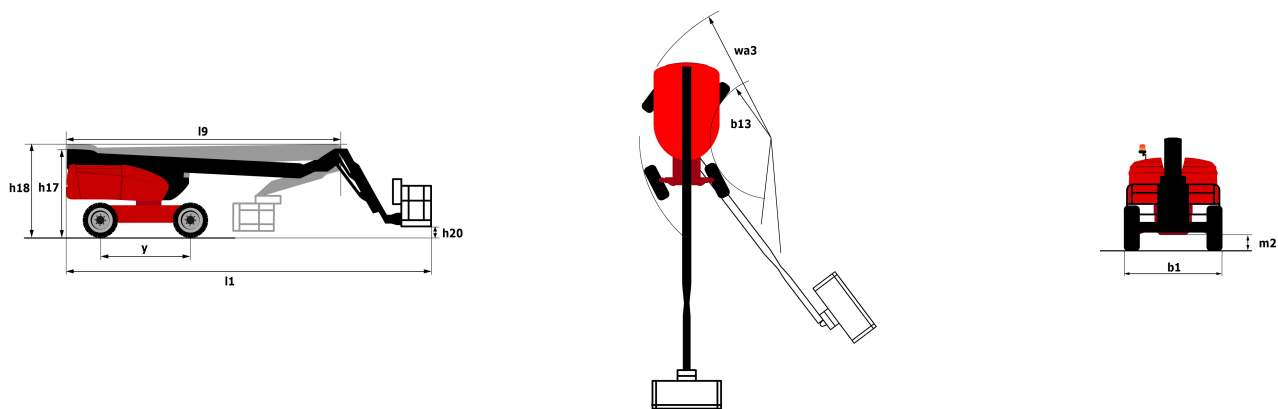
*Varies according to options and standards of the country to which the machine is delivered

** According to "REDUCE cycle"

Load chart



Dimensional drawing



Equipment

Standard

230V Predisposition
 4 simultaneous movements
 4 wheel drive
 4 wheel steer with crab mode
 Audible alarm and illuminated indicator lamp (leveling, overload, lowering)
 Backup electrical pump
 CAN bus technology
 Connected machine
 Continuous turret rotation
 Dead man pedal
 Differential locking on rear axle
 Emergency stop button in platform and on frame
 Engine on swivel chair
 Engine with DPF
 Front axle with limited slip
 Fuel gauge with low level indicator
 Horn in the platform
 Hour meter
 LED rotating beacon
 Large basket with three entries
 Oscillating front axle
 Remote control for transport
 Stop & Go system
 Telescopic jib
 Turret orientation information
 X Y function

Optional

Access control keypad for easy link
 Additional storage boxes
 Air predisposition
 Battery blanket
 Battery cut-off
 Beep on every movement
 Beep upon travel
 Biodegradable hydraulic oil
 Easy link with remote lock

Optional

Engine Block Heater

Extreme cold oil

Highly capacity battery

Hydraulic oil heater

Large basket 2.30m with lateral door

Lockable fuel cap

Narrow basket 1.80m

Non marking solid tyres

Onboard generator (3,5 or 5 kW)

Panel cradle

Personalized paintwork

Pipe cradle

SPS : Secondary protection system

Safety kit (Harness + helmet)

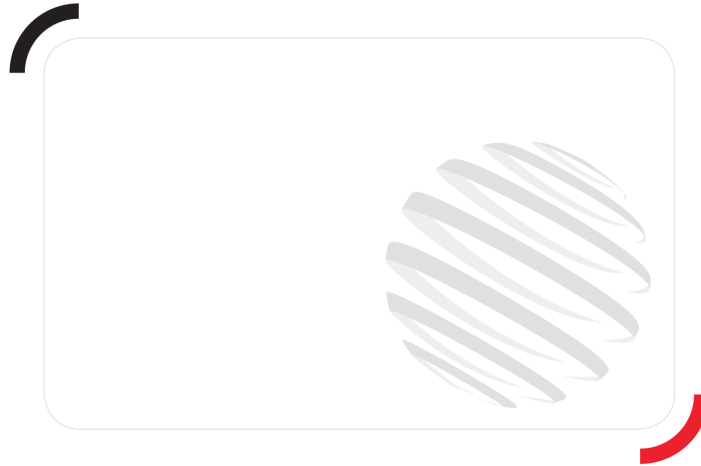
Safety valve

Screen protection on the lower box control

Socket 230 V + differential circuit breaker

Spark arrester

Working light



Siège Social
430 rue de l'Aubinière - 44150 Ancenis Cedex - France
Tel: +33(0)2 40 09 10 11 - Fax: +33 (0)2 40 09 10 97
www.manitou.com



This brochure describes versions and configuration options for Manitou products which may be fitted with different equipment. The equipment described in this brochure may be standard, optional or not available depending on version. Manitou reserves the right to change the specifications shown and described at any time and without prior warning. The manufacturer is not liable for the specifications given. For more information, contact your Manitou dealer. Non-contractual document. Product descriptions may differ from actual products. List of specifications is not comprehensive. The logos and visual identity of the company are the property of Manitou and may not be used without authorisation. All rights reserved. The photos and diagrams contained in this brochure are provided for information only.

MANITOU BF SA - Limited company with board of directors - Share capital: 39,668,399 euros - 857 802 508
RCS Nantes