

Technical sheet :

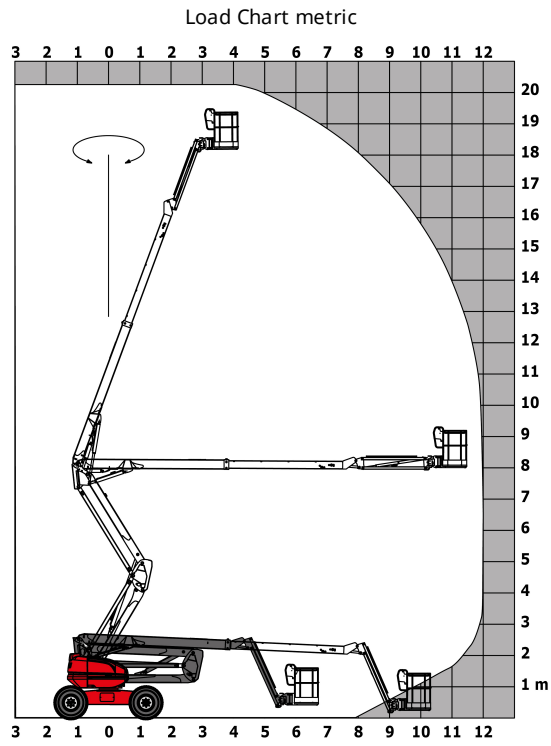
200 ATJ ST5



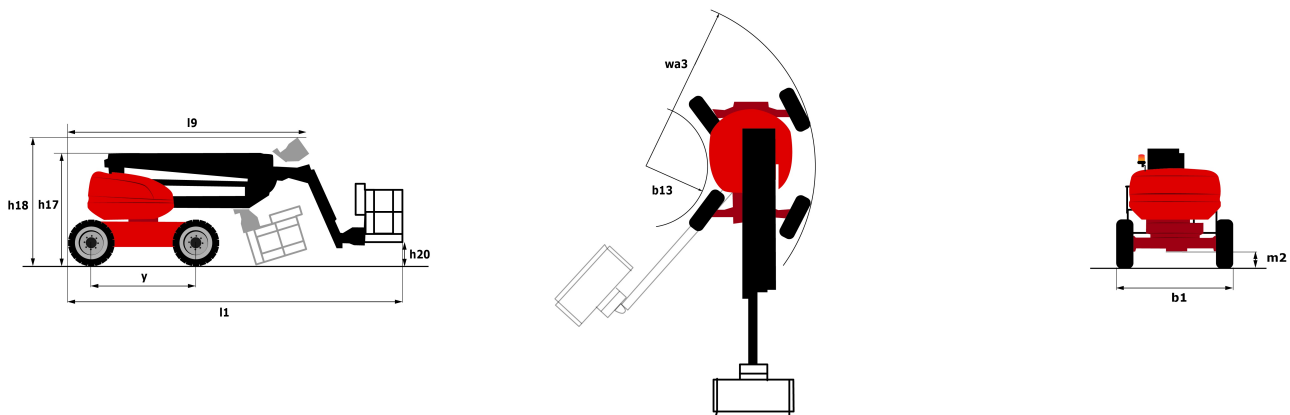
Capacities		Metric	Imperial
Working height	h21	20.35 m	66 ft 9 in
Platform height	h7	18.35 m	60 ft 2 in
Max. outreach	r1	12 m	39 ft 4 in
Overhang	h31	8 m	26 ft 3 in
Pendular arm rotation (top / bottom)		+69 ° / -66 °	+69 ° / -66 °
Platform capacity	Q	230 kg	507 lbs
Turret rotation		355 °	355 °
Platform rotation (right / left)		90 ° / 90 °	90 ° / 90 °
Number of people (inside / outside)		2 / 2	2 / 2
Weight and dimensions			
Platform weight*		10050 kg	22156 lbs
Platform dimensions (length x width)	lp / ep	2.1 m x 0.8 m	6 ft 11 in x 2 ft 7 in
Overall width	b1	2.47 m	8 ft 1 in
Overall length	l1	8.43 m	27 ft 8 in
Overall height	h17	2.7 m	8 ft 10 in
Overall length (stowed)	l9	6.24 m	20 ft 6 in
Overall height (stowed)	h18	2.99 m	9 ft 10 in
Floor height (access)	h20	500 mm	19.685 in
Counterweight offset (turret at 90°)	a7	0.11 m	4 in
Internal turning radius (over tyres)	b13	1.26 m	4 ft 2 in
External turning radius	Wa3	3.9 m	12 ft 10 in
Ground clearance at centre of wheelbase	m2	0.44 m	1 ft 5 in
Wheelbase	y	2.4 m	7 ft 10 in
Performances			
Drive speed - stowed		4.7 km/h	2.9 mph
Drive speed - raised		0.8 km/h	0.5 mph
Gradeability		40 %	40 %
Permissible leveling		5 °	5 °
Wheels			
Tyres type		Cured on foam filled tires	Cured on foam filled tires
Dimensions of front wheels / rear wheels		1025 x 365 mm - 1025 x 365 mm	1025 x 365 mm - 1025 x 365 mm
Drive wheels (front / rear)		2 / 2	2 / 2
Steering wheels (front / rear)		2 / 2	2 / 2
Braking wheels (front / rear)		0 / 2	0 / 2
Engine/Battery			
Engine brand / model		Yanmar - 3TNV88C	Yanmar - 3TNV88C
I.C. Engine power rating / Power (kW)		34 Hp / 25.5 kW	34 Hp / 25.5 kW
Miscellaneous			
Ground Pressure		20.65 daN/cm ²	299.5 PSI
Hydraulic Pressure		335 Bar	23 PSI
Hydraulic tank capacity		80 l	21.14 US gal
Fuel tank		78 l	20.61 US gal
Standards compliance			
This machine is in compliance with:		European directives: 2006/42/EC- Machinery (revised EN280:2013) - 2004/108/EC (EMC) - 2006/95/EC (Low voltage)	European directives: 2006/42/EC- Machinery (revised EN280:2013) - 2004/108/EC (EMC) - 2006/95/EC (Low voltage)

*Varies according to options and standards of the country to which the machine is delivered

Load chart



Dimensional drawing



Equipment

Standard

- 230V Predisposition
- 4 simultaneous movements
- 4 wheel drive
- 4 wheel steer with crab mode
- Audible alarm and illuminated indicator lamp (leveling, overload, lowering)
- Backup electrical pump
- CAN bus technology
- Dead man pedal
- Differential locking on rear axle
- Easy Manager
- Emergency stop button in platform and on frame
- Engine with DPF
- Front axle with limited slip
- Fuel gauge with low level indicator
- Galvanized basket 2,100 mm
- Hour meter
- LED rotating beacon
- Large color screen on turret
- Management via engine speed bearing
- Oscillating front axle
- Proportional controls
- Stop & Go system

Optional

- 110 or 230V plug with differential circuit breaker
- Access control keypad for easy link
- Air predisposition
- Battery cut-off
- Beep on every movement
- Beep upon travel
- Biodegradable oil
- Coded anti-start
- Continuous turret rotation
- Easy link with remote lock
- Extreme cold oil
- Fuel tank locking cap
- Galvanized basket 2,100 mm

Optional

Galvanized basket 2.100 mm with lateral door

Highly capacity battery

Oil tank locking cap

Onboard generator (3,5 or 5 kW)

SPS : Secondary protection system

Safety kit (Harness + helmet)

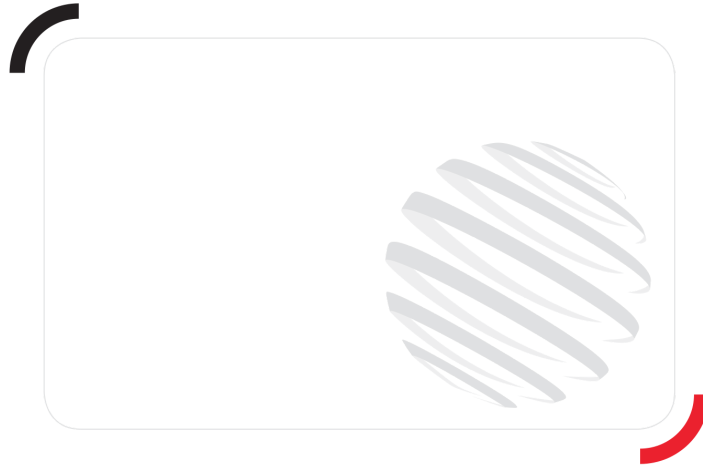
Screen protection on the lower box control

Socket 230 V + differential circuit breaker

Turret cover with key lock

Water heater

Working light



Siège Social
430 rue de l'Aubinière - 44150 Ancenis Cedex - France
Tel: +33(0)2 40 09 10 11 - Fax: +33 (0)2 40 09 10 97
www.manitou.com



This brochure describes versions and configuration options for Manitou products which may be fitted with different equipment. The equipment described in this brochure may be standard, optional or not available depending on version. Manitou reserves the right to change the specifications shown and described at any time and without prior warning. The manufacturer is not liable for the specifications given. For more information, contact your Manitou dealer. Non-contractual document. Product descriptions may differ from actual products. List of specifications is not comprehensive. The logos and visual identity of the company are the property of Manitou and may not be used without authorisation. All rights reserved. The photos and diagrams contained in this brochure are provided for information only.

MANITOU BF SA - Limited company with board of directors - Share capital: 39,668,399 euros - 857 802 508
RCS Nantes